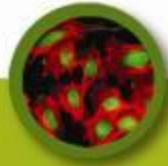




**CELLular**  
**Dynamics**  
international

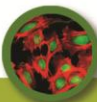
**ENCODE: *H1-Derived Neurons,***  
*Part 2*

*12/28/2011*



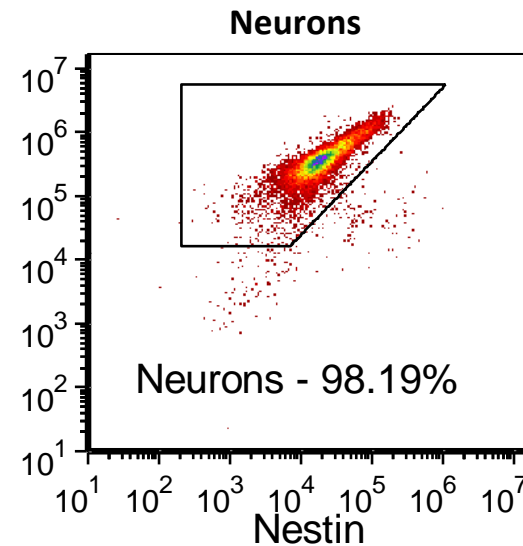
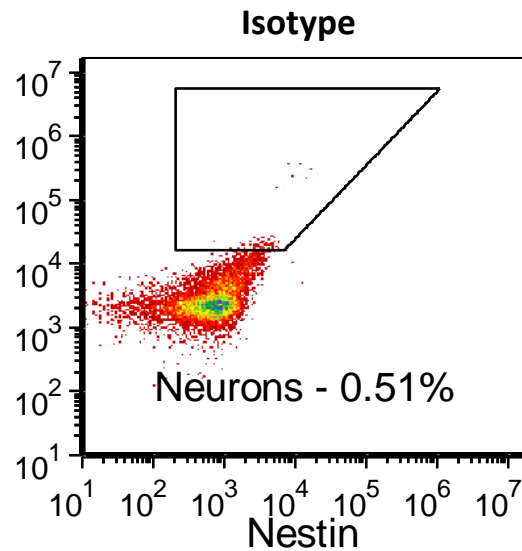
- **730M from the First Batch**
  - 63 Vials Cross-Linked
  - 35 Vials Flash Frozen
  - 6 Vials Normosol
- **1.3B cells delivered with Second Batch**
  - 117 Vials Cross-Linked
  - 65 Vials Flash Frozen

	Batch 1	Batch 2	Total
Crosslinked	63 @ 10M	117 @ 10M	180 vials
Flash Frozen	35 @ 2M	65 @ 2M	100 Vials
Normosol	6 @ 5M	-	6 Vials
Total Cells	730M	1300M	2000M

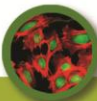


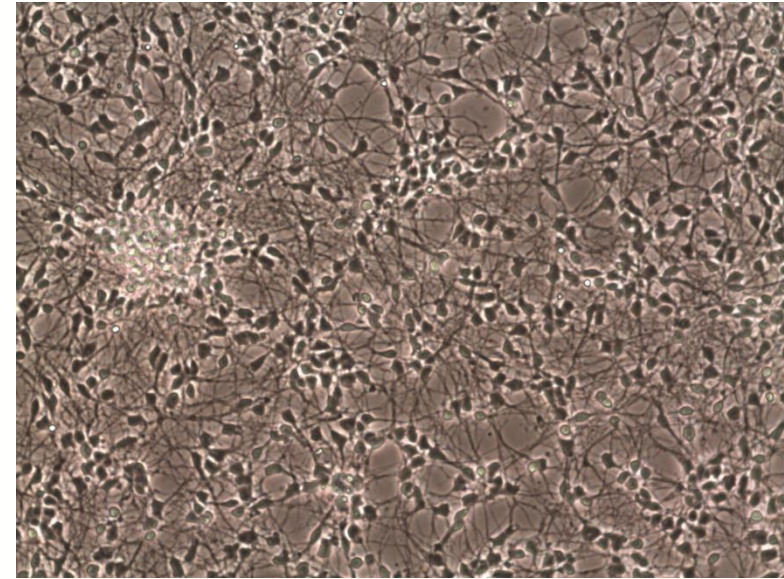
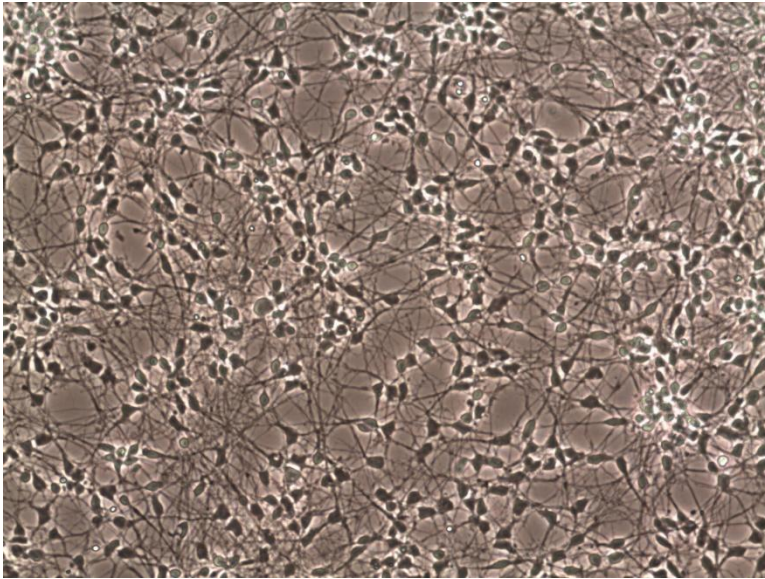
- Harvested on Day 28 of differentiation
- Final vial counts:
  - Total neurons: 1.3B
  - Snap frozen ( $2 \times 10^6$  cells/vial): 65 vials
  - Cross-linked ( $1 \times 10^7$  cells/vial): 117 vials



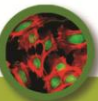


H1-derived neurons represent a highly pure population as demonstrated by flow cytometric analysis of  $\beta$ III tubulin (TuJ1) and the absence of nestin.





Day 27 images, 100X magnification





## Case Details:

Cell Line: H1 Passage #: 42

Date of Sample: 11/17/2011

Date Completed: 12/06/2011

**Results: 46,XY Apparently  
NORMAL Male Human**

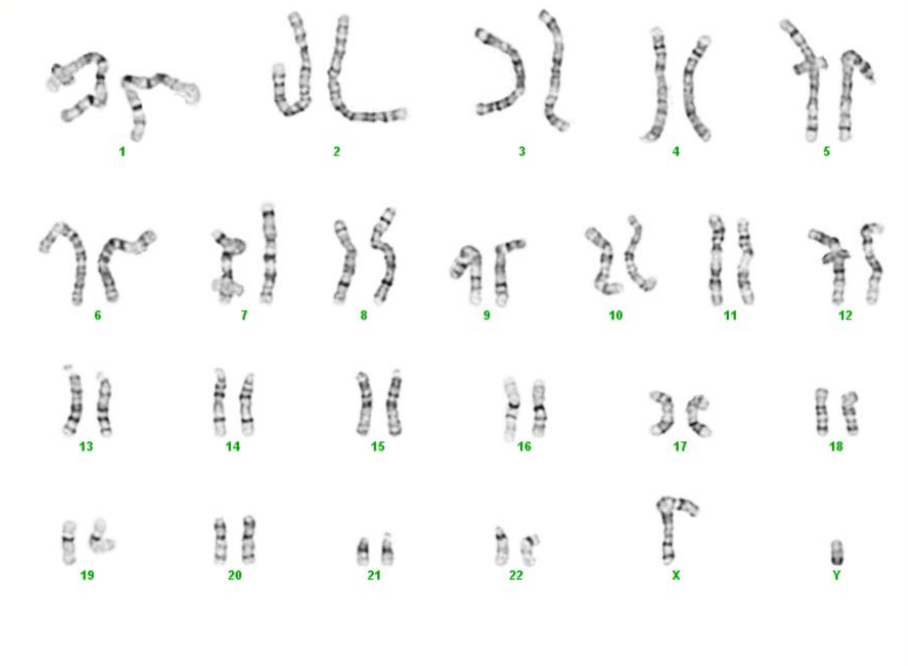
# of Cells Counted: 20

# of Cells Karyotyped: 2

# of Cells Analyzed: 7

Banding Technique: GTL

Band Resolution: Good



**Interpretation: Cytogenetic analysis was performed on twenty G-banded metaphase cells from human cell line H1 p42 and all twenty cells demonstrated an apparently normal male karyotype. No abnormal cells were detected.**

