

GATA2 antibody validation

Rabbit polyclonal antibody provided by Dr. E. Bresnick, UW, Madison

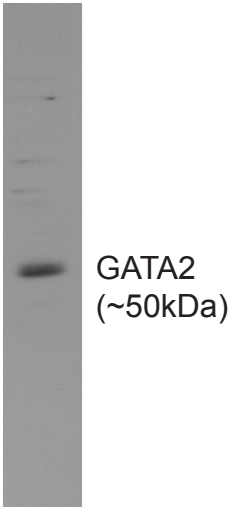


Fig1 Western Blot analysis using K562 whole cell extract

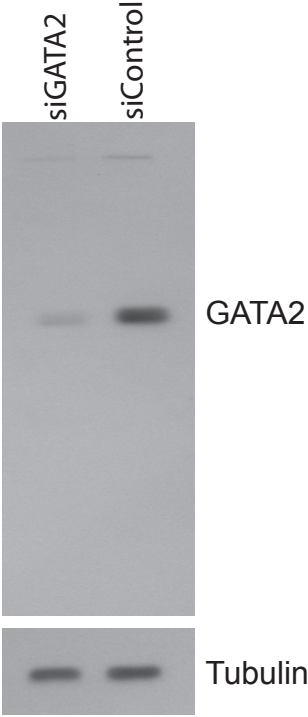


Fig2. GATA2 antibody specificity was determined in SHSY5Y cells by transfection with GATA2 siRNA. Control siRNA was used for a mock transfection. Whole cell lysates were analysed by Western blot using antibodies against GATA2 and tubulin. As shown, GATA2 protein levels were reduced when treated with siGATA2, but not in the mock sample. The loading control tubulin remained the same.