

H3K27me3 antibody validation performed by CST
 CST Cat#: 9733 Lot#1
<http://www.cellsignal.com/products/9733.html>

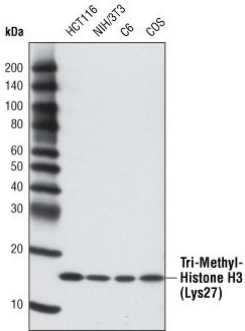


Fig1. Western blot analysis of various cell lines using Tri-Methyl-Histone H3 (Lys27) (C36B11) Rabbit mAb.

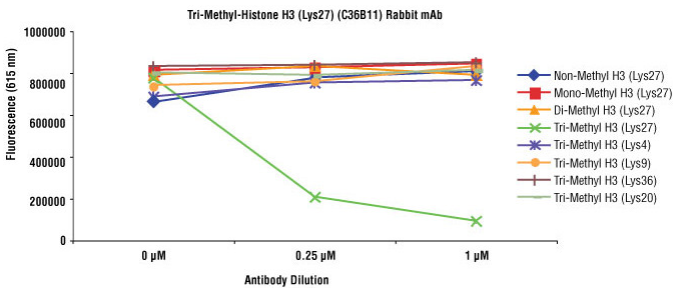


Fig2. Tri-Methyl Histone H3 (Lys27) (C36B11) Rabbit mAb specificity was determined by peptide ELISA. The graph depicts the binding of the antibody to pre-coated tri-methyl histone H3 (Lys27) peptide in the presence of increasing concentrations of various competitor peptides. As shown, only the tri-methyl histone H3 (Lys27) peptide competed away binding of the antibody.