

ENCODE Antibody Validation Documentation Transcription factor: MEF2A (GeneID 4205)

From: Myers Lab, HudsonAlpha Institute for Biotechnology
Contact Person: Dr. Florencia Pauli (fpauli@hudsonalpha.org)

Transcription factor: MEF2A (GeneID 4205; ~40-65 kDa)

Antibody: MEF2 (C-21), Santa Cruz Biotechnology (sc-313)
Rabbit polyclonal, epitope mapping at the C-terminus of MEF2 of human origin
Web: <http://www.scbt.com/datasheet-313-mef-2-c-21-antibody.html>

Validation 1: Immunoblot Analysis

For an antibody to meet ENCODE validation standards, a single band of the predicted size, or a band of no less than half the total signal, must be detected in a lane on a Western blot.

a. Vendor immunoblot analysis

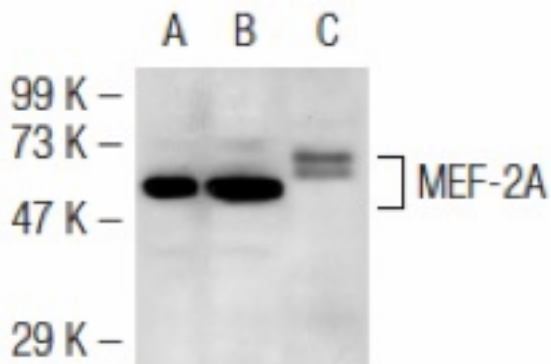


Figure Legend: Western blot analysis of MEF2 expression in non-transfected 293T: sc-117752 (A), mouse MEF-2 transfected 293T: sc-127140 (B) and NIH/3T3 (C) whole cell lysates.

b. Myers Lab immunoblot analysis

Western blot protocol

Whole cell lysates were immunoprecipitated using primary antibody, and the IP fraction was loaded on a 12% acrylamide gel and separated with a Bio-Rad PROTEAN II xi system. After separation, the samples were transferred to a nitrocellulose membrane with an Invitrogen iBlot system. Blotting with primary (same as that used for IP) and secondary HRP-conjugated antibodies was performed on an Invitrogen BenchPro 4100 system. Visualization was achieved using SuperSignal West Femto solution (Thermo Scientific).

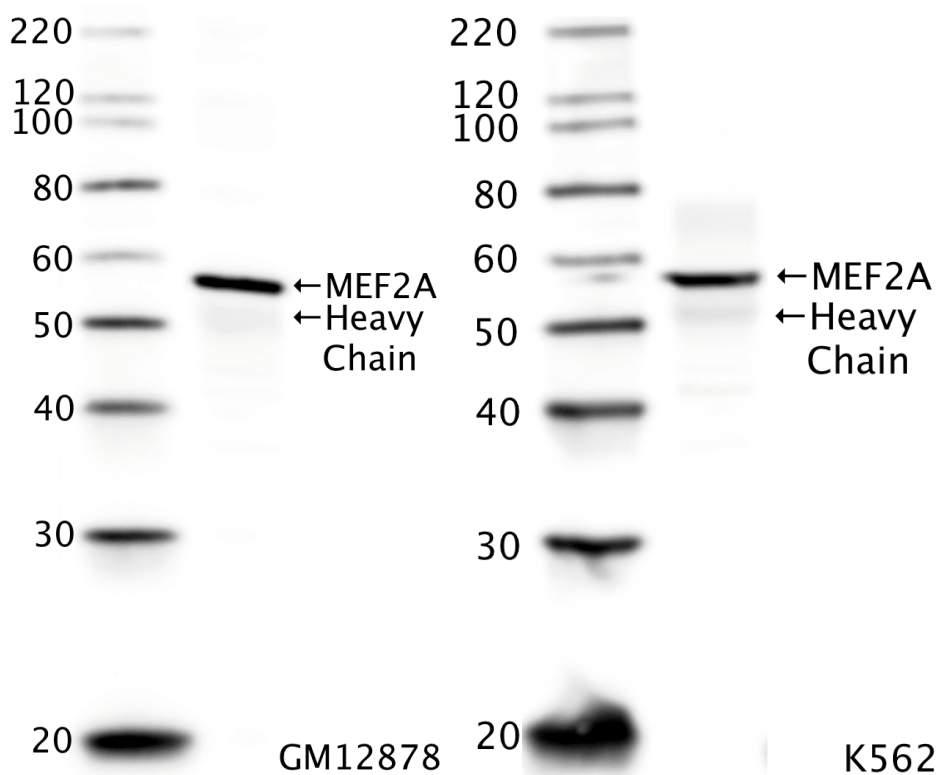


Figure Legend: MEF2A immunoblots: IP-western with sc-313 MEF2A antibody in whole cell lysates of GM12878 and K562. Heavy chain of IgG is indicated. MEF2A band is indicated at ~57 kDa.

Validation 2: In progress