

ENCODE DCC Antibody Validation Document

Date of Submission

Name:

Email:

Lab

Antibody Name:

Target:

Company/
Source:

Catalog Number, database ID, laboratory

Lot Number

Antibody
Description:

Target
Description:

Species Target

Species Host

Validation Method #1

Validation Method #2

Purification
Method

Polyclonal/
Monoclonal

Vendor URL:

Reference (PI/
Publication
Information)

Please complete the following for antibodies to histone modifications:
*if your specifications are not listed in the drop-down box,
please write-in the appropriate information*

Histone Name

AA modified

AA Position

Modification

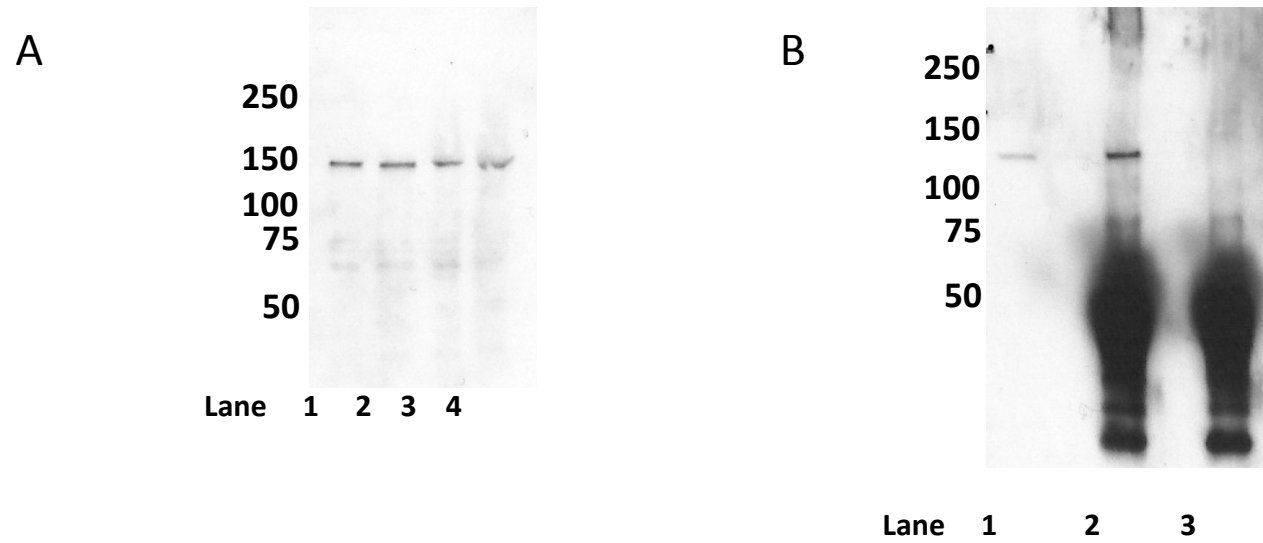
Validation #1
Analysis



Insert Validation Image (click here)

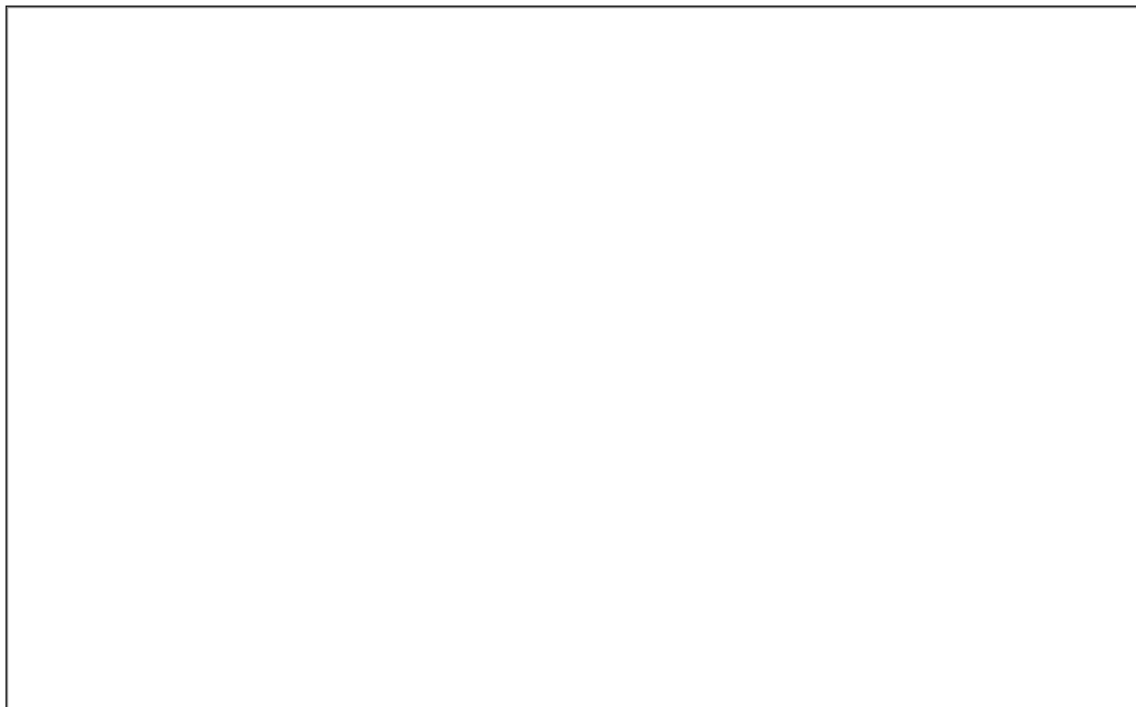


ab9263 (SMC3) immunoblot

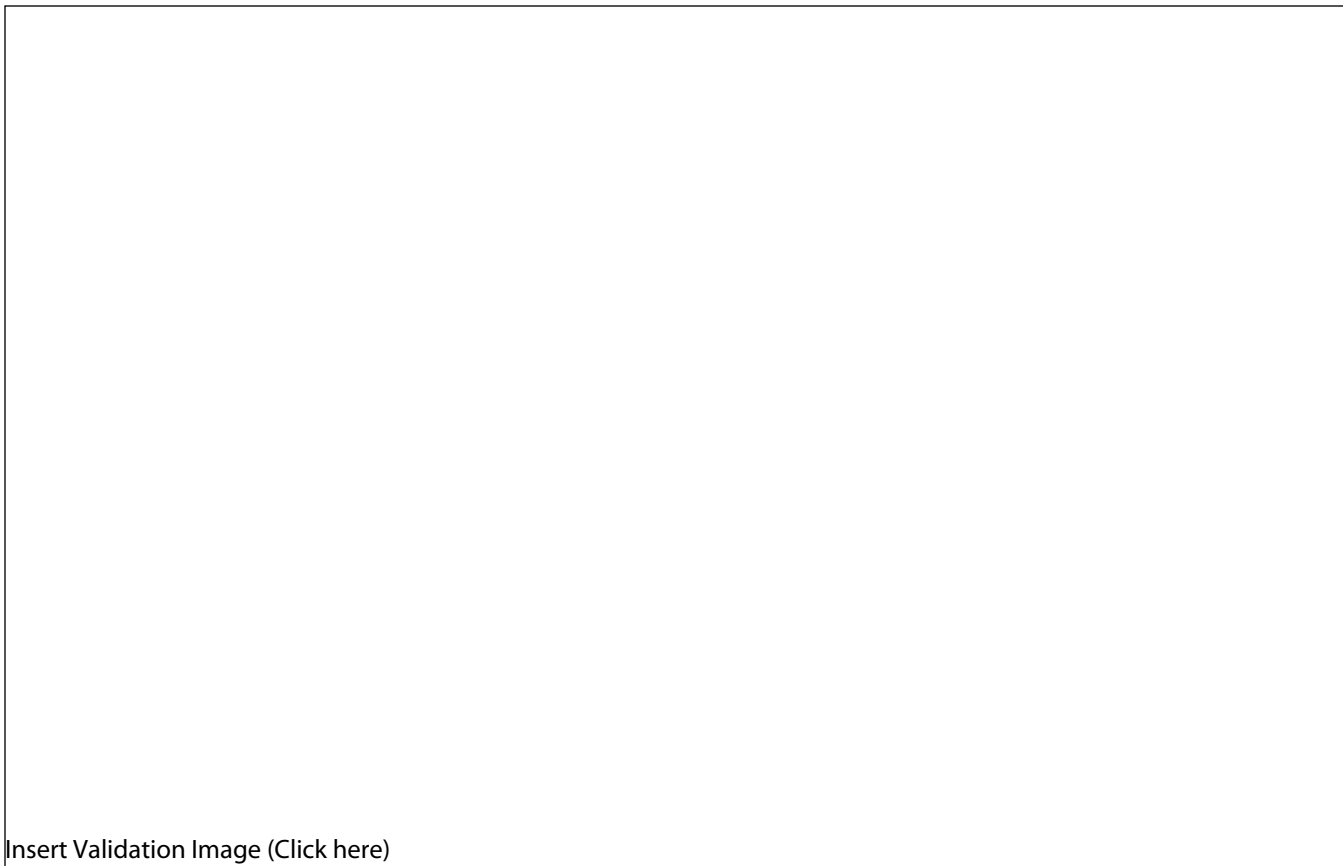


- A.** Western blot using ab9263. Lanes contain nuclear lysates from GM12878 cells (Lane 1), K562 cells (Lane 2), HeLa S3 cells (Lane 3), and HepG2 cells (Lane 4).
- B.** Immunoprecipitation of SMC3 from K562 cells using ab9263. Lane 1: input nuclear lysate, Lane 2: material immunoprecipitated with ab9263, Lane 3: material immunoprecipitated using control IgG.

Validation #2
Analysis



Insert Validation Image (Click here)



Comparison of ab9263 (SMC3) with ab992 (Rad21)

	SMC3-ab9263 vs. Rad21- ab992	Rad21- ab992 vs. SMC3-ab9263
Total hits ratio (Q=.01)	1.11	0.90
% Peak overlap (Q=.01)	96.75	99.28