

ENCODE DCC Antibody Validation Document

Date of Submission

Name:

Email:

Lab

Antibody Name:

Target:

Company/
Source:

Catalog Number, database ID, laboratory

Lot Number

Antibody
Description:

Target
Description:

Species Target

Species Host

Validation Method #1

Validation Method #2

Purification
Method

Polyclonal/
Monoclonal

Vendor URL:

Reference (PI/
Publication
Information)

Please complete the following for antibodies to histone modifications:
*if your specifications are not listed in the drop-down box,
please write-in the appropriate information*

Histone Name

AA modified

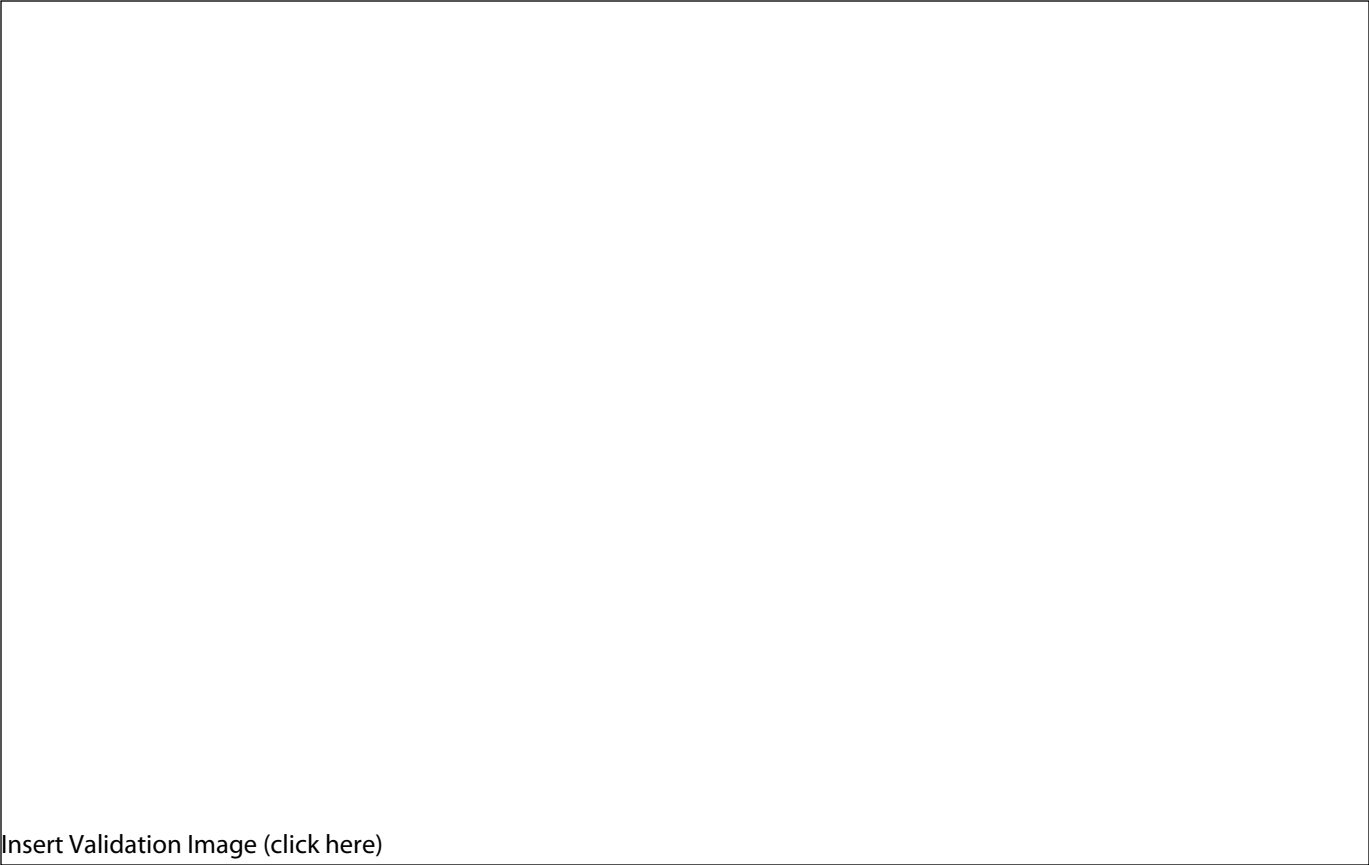
AA Position

Modification

Validation #1
Analysis



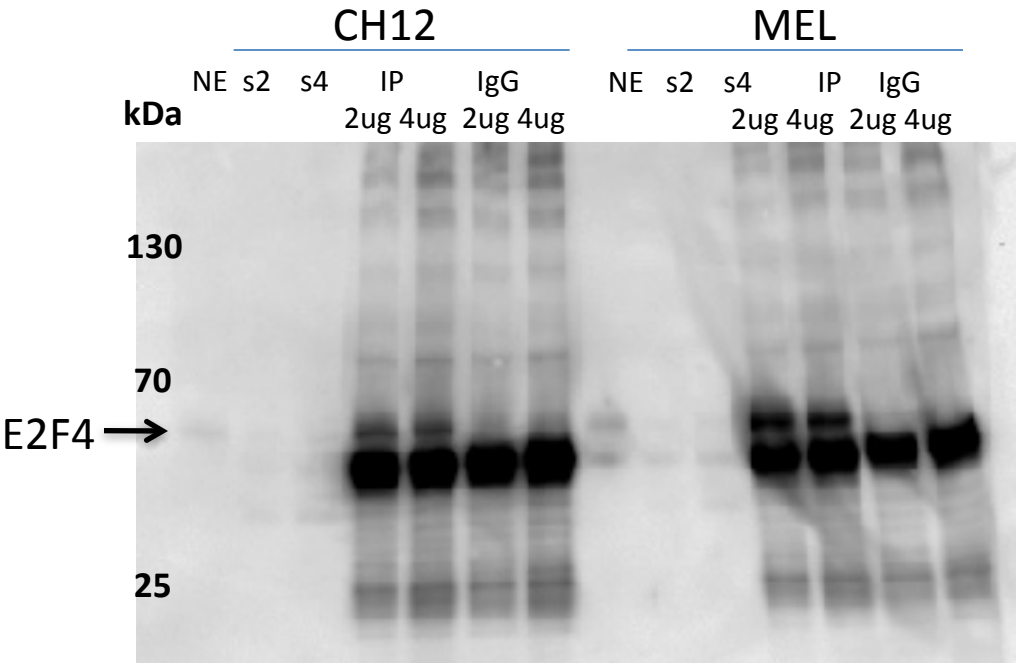
Insert Validation Image (click here)



Antibody: E2F4 Source: Santa Cruz Biotech sc-866

Epitope: rabbit polyclonal IgG, epitope mapping at the C-terminus of E2F-4 of human origin

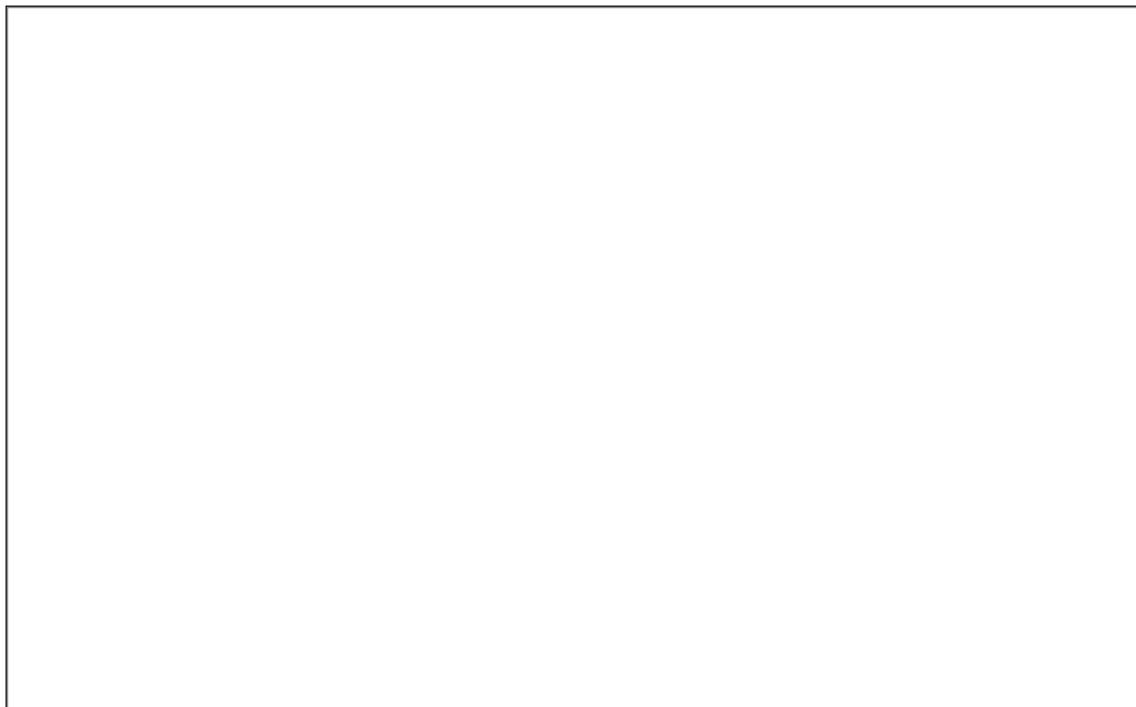
Validation 1: Immunoprecipitation (IP) in both CH12 and MEL cell lines



Arrow indicates immunoprecipitated band of expected size of E2F4 in both CH12 and MEL cell lines (~60 kDa).

- NE: nuclear extract
- S2: supernatant after IP with 2ug antibody
- S4: supernatant after IP with 4ug antibody
- IP: IP with indicated amount of tested antibody
- IgG: IP with indicated amount of control IgG

Validation #2
Analysis



Insert Validation Image (Click here)