

ENCODE DCC Antibody Validation Document

Date of Submission

Name:

Email:

Lab

Antibody Name:

Target:

Company/
Source:

Catalog Number, database ID, laboratory

Lot Number

Antibody
Description:

Target
Description:

Species Target

Species Host

Validation Method #1

Validation Method #2

Purification
Method

Polyclonal/
Monoclonal

Vendor URL:

Reference (PI/
Publication
Information)

Please complete the following for antibodies to histone modifications:
*if your specifications are not listed in the drop-down box,
please write-in the appropriate information*

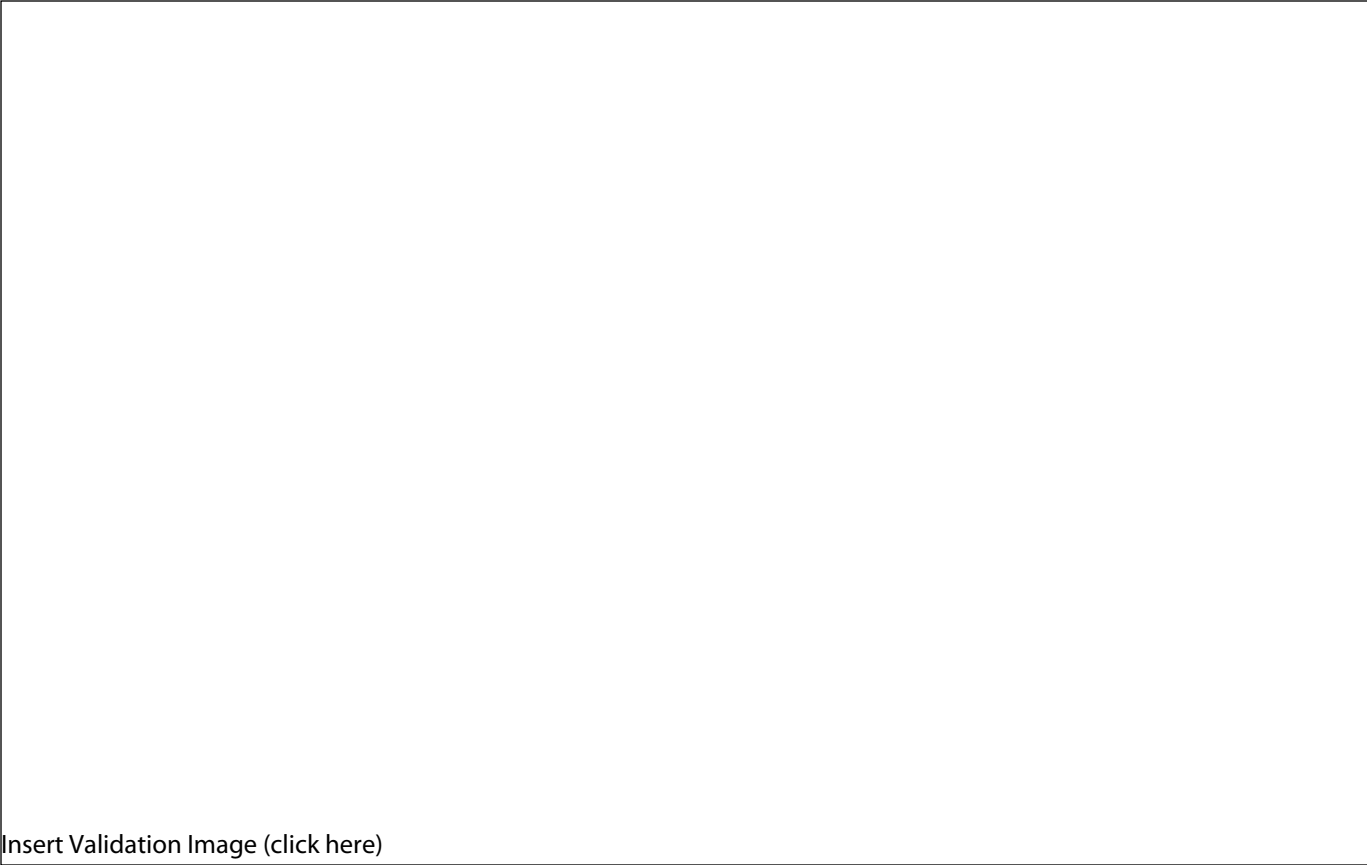
Histone Name

AA modified

AA Position

Modification

Validation #1
Analysis



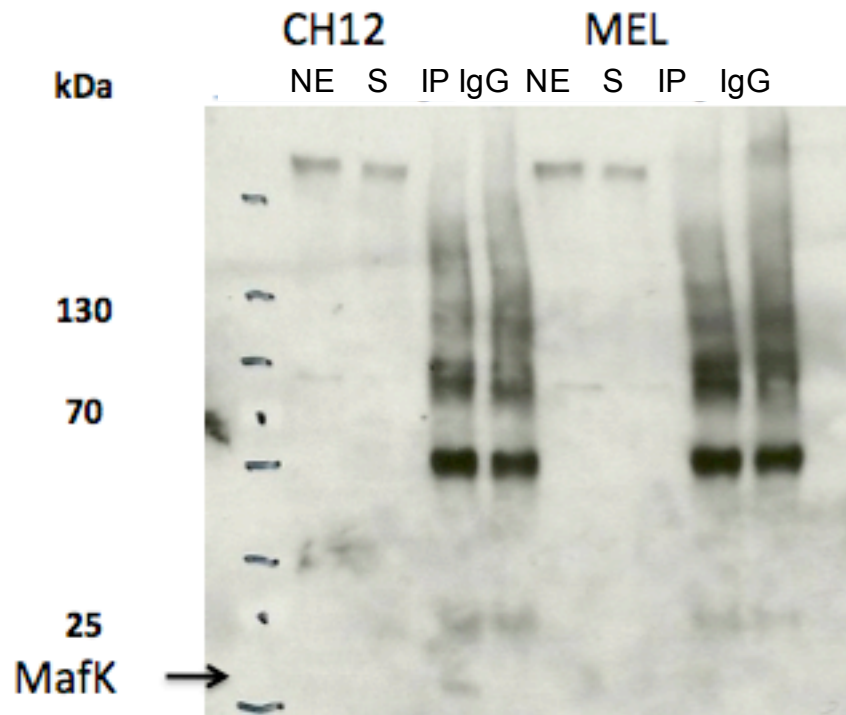
Insert Validation Image (click here)

Antibody: MafK Source: Abcam ab50322

Epitope: Rabbit polyclonal to MAFK

Synthetic peptide: TTNPKPNKALKVKKEA conjugated to KLH by a C-terminal Cysteine residue linker, corresponding to amino acids 2-17 of Human MAFK

Validation 1: Immunoprecipitation (IP) in both CH12 and MEL cell lines (IP in MEL is too weak in this figure but can be seen on original film)



Arrow indicates immunoprecipitated band of expected size of MafK in both CH12 and MEL cell lines (~18 kDa).

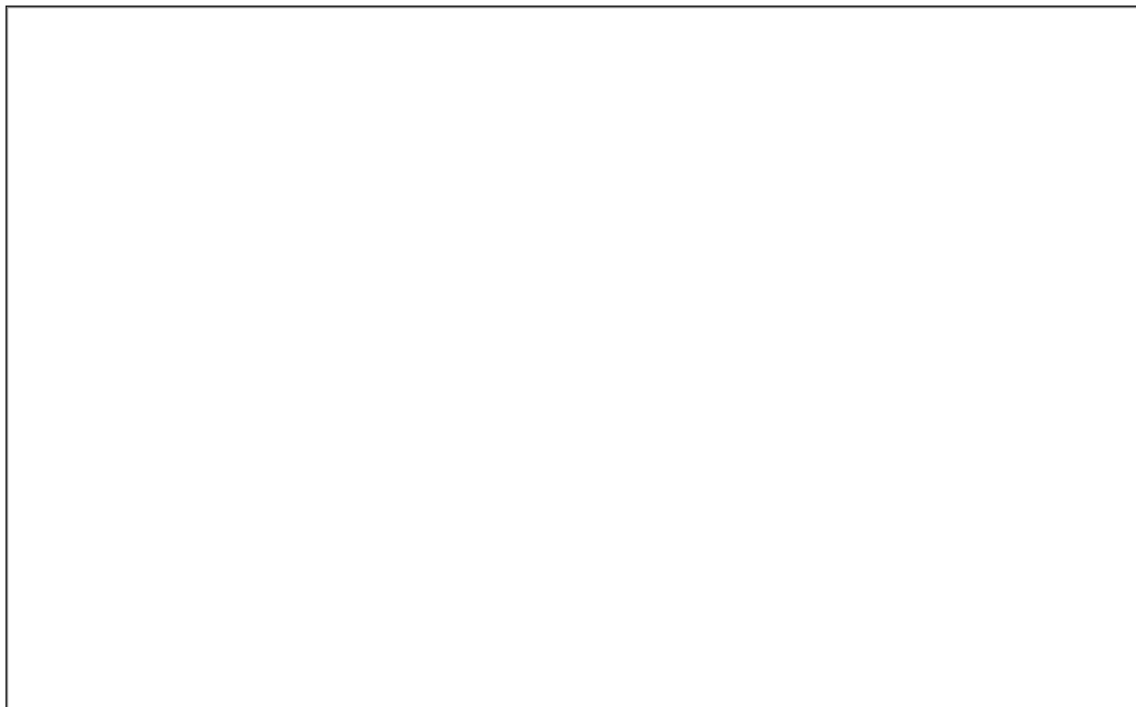
NE: nuclear lysate

S: supernatant after IP

IP: IP with tested antibody

IgG: IP with control IgG

Validation #2
Analysis



Insert Validation Image (Click here)

