

ENCODE DCC Antibody Validation Document

Date of Submission

Name:

Email:

Lab

Antibody Name:

Target:

Company/
Source:

Catalog Number, database ID, laboratory

Lot Number

Antibody Description:

Target Description:

Species Target

Species Host

Validation Method #1

Validation Method #2

Purification Method

Polyclonal/
Monoclonal

Vendor URL:

Reference (PI/
Publication
Information)

Please complete the following for antibodies to histone modifications:
*if your specifications are not listed in the drop-down box,
please write-in the appropriate information*

Histone Name

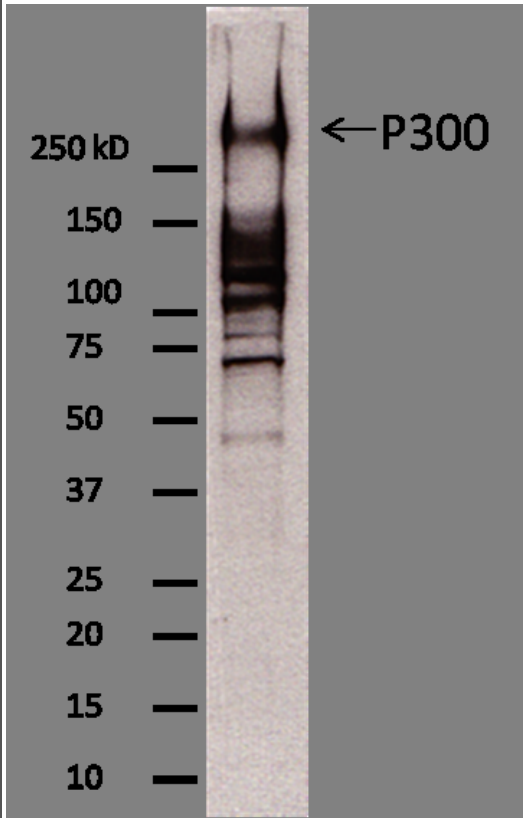
AA modified

AA Position

Modification

Validation #1
Analysis

Western blot analysis of lysates from hela nuclear extract using rabbit polyclonal to P300

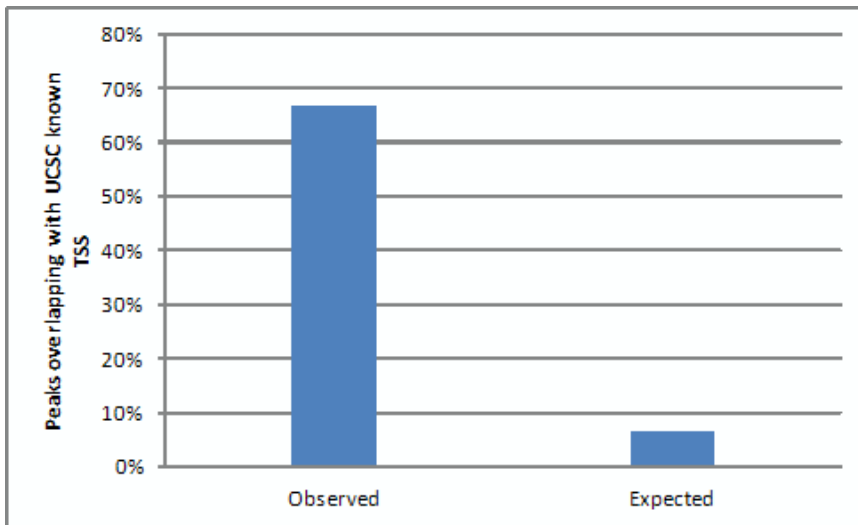


Insert Validation Image (click here)

Validation #2
Analysis

We performed CHIP-seq of P300 in mESCs with two biological replicates, and called peaks by MACS with the default parameter (P value < 1e-5).

67% out of the 16,054 distal P300 binding sites overlap with predicted enhancers by H3K4me1, compared to random expected 6.5% (P < 2.2 x e -16 (chi-square test)). This results shows that the P300 antibody we use is specific.



Insert Validation Image (Click here)

Submit by Email